

SQUIRE STAINLESS

RESIDENTIAL SIZE INDIRECT WATER HEATER



KEY FEATURES

- Storage capacities from 130-305 litres, up to 500 litres on heat pump range
- Duplex Stainless-steel construction
- Twin thermostat factory fitted (2 on twin coil models)
- Standard immersion heaters(S)
- In the box unvented kit and expansion vessel included
- Up to 6 bar working pressure

Lochinvar Squire stainless steel indirect water heaters

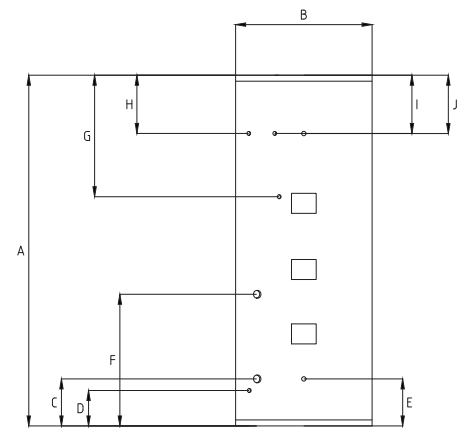
The Squire stainless residential range is available in three versions and can be used in domestic or small commercial applications.

- Single coil models are suitable for connection to a heating boiler or solar thermal system, they include as standard 2no immersion heaters which can be used for backup to support a solar thermal system.
- Twin coil models are suitable for connection to both a heating boiler and solar thermal system, included is a single immersion heater.
- Heat pump models feature a large internal coil to extract as much heat as possible from the heat pump system.



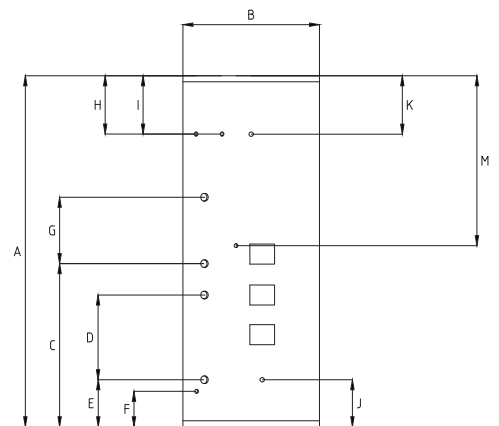
Single coil models

Model	A	B	C	D	E	F	G	H	I	J
SSCF130	957	576	215	185	185	192.5	322	222	222	222
SSCF150	1085	576	215	185	185	192.5	337	222	222	222
SSCF175	1242	576	215	185	185	267.5	470	222	222	222
SSCF215	1484	576	215	185	185	267.5	665	222	222	222
SSCF255	1752	576	215	185	185	267.5	665	222	222	222
SSCF305	2028	576	215	185	185	267.5	665	222	222	222



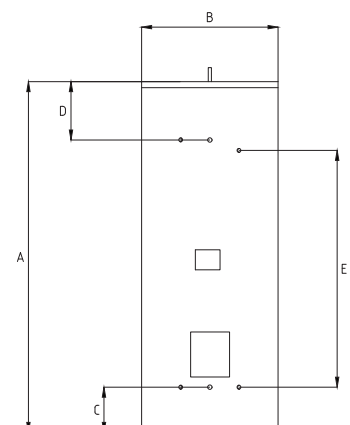
Twin coil models

Model	A	B	C	D	E	F	G	H	I	J	K
STCF130	957	576	505	192.5	215	185	192.5	222	222	185	222
STCF150	1085	576	505	192.5	215	185	192.5	222	222	185	222
STCF175	1242	576	580	267.5	215	185	262.5	222	222	185	222
STCF215	1484	576	580	267.5	215	185	262.5	222	222	185	222
STCF255	1752	576	580	267.5	215	185	262.5	222	222	185	222
STCF305	2028	576	580	267.5	215	185	262.5	222	222	185	222



Heat pump models

Model	A	B	C	D	E
SIVSHP-150	1085	575	182	225	182
SIVSHP-175	1242	575	182	225	182
SIVSHP-215	1485	575	182	225	182
SIVSHP-250	1752	575	182	225	182
SIVSHP-305	2028	575	182	225	182
SIVSHP-400	1405	750	228	262	228
SIVSHP-500	1690	750	228	262	228



Technical specifications

Model		SSCF 130	SSCF 150	SSCF 175	SSCF 215	SSCF 255	SSCF 305
General data							
Storage volume	Litres	130	150	175	215	255	305
Heat loss	kW/24 hours	1.22	1.36	1.53	1.72	1.87	2.05
Coil size	m ²	0.75	0.75	1.1	1.1	1.1	1.1
Coil rating	kW	20	20	29	29	29	29
flowrate	l/sec	0.33	0.33	0.33	0.33	0.33	0.33
pressure drop	bar	0.3	0.3	0.3	0.3	0.3	0.3
Reheat time	mins	23	26	21	26	31	37
Immersion heater	kW	2 x 3	2 x 3	2 x 3	2 x 3	2 x 3	2 x 3
Connections							
Cold inlet	mm	22	22	22	22	22	22
Hot outlet	mm	22	22	22	22	22	22
Coil	mm	22	22	22	22	22	22
Immersion heater	Inch BSP	1¼	1¼	1¼	1¼	1¼	1¼

Model		STCF 130	STCF 150	STCF 175	STCF 215	STCF 255	STCF 305
General data							
Storage volume	Litres	130	150	175	215	255	305
Heat loss	kW/24 hours	1.22	1.36	1.53	1.72	1.87	2.05
Top Coil size	m ²	0.54	0.54	0.75	0.75	0.75	0.75
Top Coil rating	kW	14.6	14.6	20	20	20	20
Top Coil flowrate	l/sec	0.33	0.33	0.33	0.33	0.33	0.33
Bottom coil size	m ²	0.75	0.75	1.1	1.1	1.1	1.1
Bottom Coil rating	kW	20	20	29	29	29	29
flowrate	l/sec	0.33	0.33	0.33	0.33	0.33	0.33
pressure drop	bar	0.3	0.3	0.3	0.3	0.3	0.3
Reheat time*	mins	31	36	31	37	44	53
Immersion heater	kW	1 x 3	1 x 3	1 x 3	1 x 3	1 x 3	1 x 3
Connections							
Cold inlet	mm	22	22	22	22	22	22
Hot outlet	mm	22	22	22	22	22	22
Coil	mm	22	22	22	22	22	22
Immersion heater	Inch BSP	1¼	1¼	1¼	1¼	1¼	1¼

*Using top coil only with shunt pump

Model		SIVSHP- 150	SIVSHP- 175	SIVSHP- 215	SIVSHP- 250	SIVSHP- 305	SIVSHP- 400	SIVSHP- 500
General data								
Storage volume	Litres	150	175	215	255	305	400	500
Heat loss	kW/24 hours	1.36	1.53	1.72	1.87	2.05	2.64	2.78
Coil size	m ²	2	2	3	3	3	4	4
Coil rating	kW	7	7	10	10	10	13	13
flowrate	l/sec	0.45	0.45	0.4	0.4	0.4	0.35	0.35
pressure drop	bar	0.3	0.3	0.3	0.3	0.3	0.3	0.3
Reheat time	mins	75	87	75	89	106	107	107
Immersion heater	kW	1 x 3	1 x 3	1 x 3	1 x 3	1 x 3	1 x 3	1 x 3
Connections								
Cold inlet	mm	22	22	22	22	22	22	22
Hot outlet	mm	22	22	22	22	22	22	22
Coil	mm	28	28	28	28	28	1"	1"
Immersion heater	Inch BSP	1¼	1¼	1¼	1¼	1¼	1¼	1¼

ErP Data

Model		SSCF 130	SSCF 150	SSCF 175	SSCF 215	SSCF 255	SSCF 305
Energy efficiency class		B	C	C	C	C	C
Standing loss	Watts	51	57	64	72	78	85
Storage volume	Litres	130	150	175	215	255	305

Model		STCF 130	STCF 150	STCF 175	STCF 215	STCF 255	STCF 305
Energy efficiency class		B	C	C	C	C	C
Standing loss	Watts	51	57	64	72	78	85
Storage volume	Litres	130	150	175	215	255	305

Model		SIVSHP-150	SIVSHP-175	SIVSHP-215	SIVSHP-250	SIVSHP-305	SIVSHP-400	SIVSHP-500
Energy efficiency class		C	C	C	C	C	C	C
Standing loss	Watts	57	64	72	78	85	110	116
Storage volume	Litres	150	175	215	255	305	400	500



Energy label, product fiche and ErP data table are available at www.lochinvar.ltd.uk

For further information on the Squire Stainless residential size indirect water heaters, including ICM & user instructions and our full warranty terms and conditions, please visit our website: www.lochinvar.ltd.uk



8 Lombard Way, The MXL Centre, Banbury, Oxon, OX16 4TJ
 Tel: +44(0) 1295 269 981, Fax: +44(0) 1295 271 640, Email: info@lochinvar.ltd.uk
www.lochinvar.ltd.uk

Lochinvar Ltd reserves the right to change specifications without prior notice

LOC_24_0004 | SSCF STCF SIVSHP | May 2024